



MADE TO  
ORDER



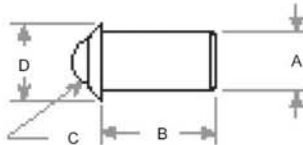
## Ball Plungers

Non-threaded design push-fits into hole. Spring loaded ball forms bearing surface which retracts and then snaps into opposing hole or groove. Use for locating or positioning in drawers, doors, dies and other fixtures. Special available in a variety of sizes, materials and finishes. Stock sizes are low carbon steel, black oxide finish.



Install Ball Plunger into push-fit hole in material. Spring loaded ball automatically depresses to allow adjustments.

Spring loaded ball then snaps back into the desired hole, groove



### Ball Plungers - Black Oxide Finish

Part No.	Stock Sizes	Pull Force, Lbs.		A	B	C	D	Approximate Weight/Pounds per 100 pieces
		Initial	Final					
BP4-471	1/4	3	7	.250	.471	.187	.312	.56
BP6-786	3/8	5	14	.375	.786	.313	.500	1.69

*Unless otherwise noted, all dimensions are for reference only.*



*Design a Pull Pin or Ball Plunger made to your exact specifications!  
We offer free engineering assistance and samples!*

#### PULL PINS

- SPECIAL SIZE
- DIFFERENT MATERIAL/FINISH
- SPECIAL PULL FORCE
- 1/4 TURN STYLE

#### BALL PLUNGERS

- SPECIAL SIZE
- SPECIAL BODY SHAPES
- DIFFERENT MATERIAL/FINISH
- HIGHER/LOWER COMPRESSION FORCE