



720F SERIES MULTI GRIP PUSH TURN



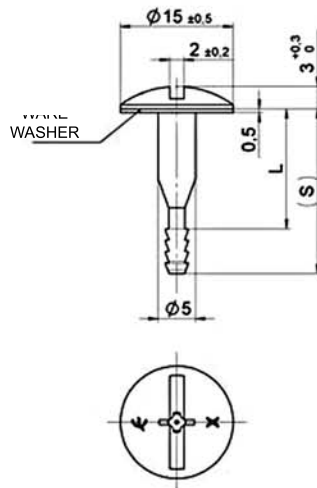
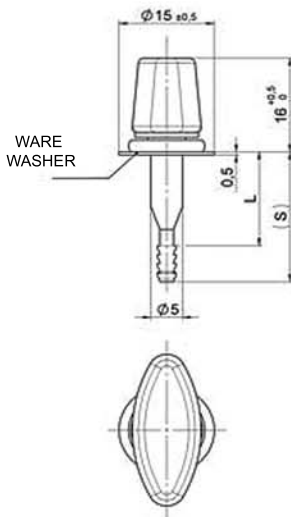
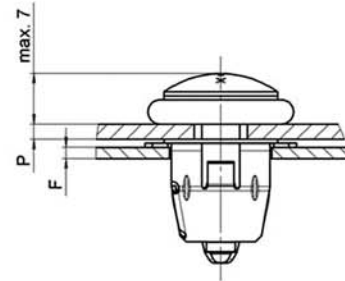
Features

- 3mm Grip range
- Push to close - 1/4 turn to open
- Max. Tensile strength 1200 N.
- Snap-in receptacle.
- Captive stud assembly.
- Tool or hand operated.

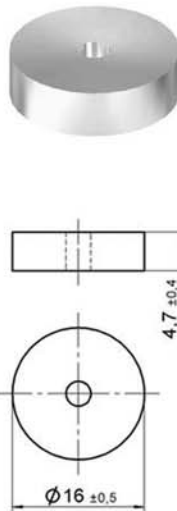
Wing Head



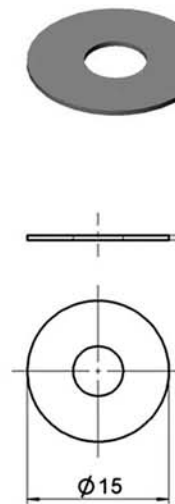
Slot-Cross Recess Head



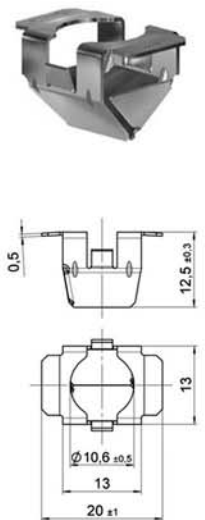
Compensation Washer



Retaining Washer



Snap-in Receptacle



For part selection and installation instructions see sheet 2

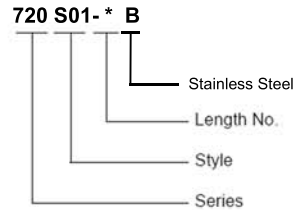
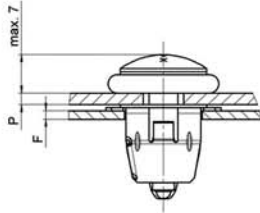
Sheet 1 of 2



720F SERIES MULTI GRIP PUSH TURN

Selection Instructions

1. Select stud assembly according to panel thickness P, and clip-in receptacle according to frame thickness F,
2. Select Compensating washer and Retaining washer,
3. Select stud length number from panel thickness P using the formula and table, insert into stud part number



Part	Material	°C	Part number
Combi Slot Stud	Stainless Steel Washer: PA 6 - Natural colour	-20 to +70	720S01-*B
Wing Head Stud	Stainless Steel Handle: PA6 Black Washer: PA 6 - Natural colour	-20 to +70	720S02-*B
Compensating Washer	Plastic (PU) Foam/yellow	-20 to +70	720W01-*2K
Retaining Ring	PA6 Natural colour	-20 to +70	50E15-1K

Part	Material	Frame Thickness 'F'	°C	Part Number
Clip - in Receptacle	Stainless Steel	1,0 - 1,5	-20 to +70	720R01-1B
		1,5 - 2,0		720R01-2B
		2,0 - 2,5		720R01-3B
		2,5 - 3,0		720R01-4B

Stud length table

Panel Thickness P	Slot-Cross Recess Length No.	Wing Head Stud Length No.	Dimension L +0,1/-0,2	Dimension (S)
1,00 - 4,00	1	1	16	21
4,00 - 7,00	2	2	19	24
7,00 - 10,00	3	3	22	27

Installation instructions

